

COLUMNS & BOOMS

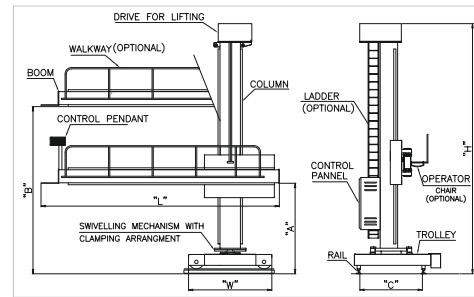
Systems ranging from 2020 to 6060 in various permutations and combinations

APPLICATIONS

- The range of Columns and Booms offered by ADOR are ideally recommended for manipulating / positioning of welding head to facilitate SAW and MIG/MAG welding processes of long and circumferential seams of tanks, barrels / shells pressure vessels, process equipments, tubular components etc
- Ideally recommended for enhancing productivity with quality for repetitive jobs in heavy equipment fabrication/manufacturing industries, Railway workshops, shipyards, steel plants, process equipment manufacturers for sugar mills, cement and fertiliser plants etc

SALIENT FEATURES

- Robust design and construction, accurately machined guides for both vertical and horizontal travel for longer service life and minimum maintenance
- Boom payload capacity of 250 Kgs
- Base of column: Pedestal or Trolley type
- 360 degree manual rotation of the column ensure 360 degree radial accessibility to welding head, conveying vast area in shop
- Fixed speed AC motor drive for vertical lift of the boom with lift speed of 750mm/min or 1000 mm/min depending on application
- Variable speed horizontal boom travel using VFD drives with horizontal speed infinitely variable from 150 to 1500mm/min
- Anti-fall safety mechanism in case of chain failure
- Roller bearings with eccentric pin mounting for easy adjustment of guiding pressure.
- Electrical and mechanical limiting mechanism against overriding
- Precise jerk free vertical & horizontal movement
- Extra optional features like seam tracking / oscillation, twin wire feed drive for SAW welding, mini flux recovery unit, grinding/buffing attachments can be provided on welding head depending on application requirement
- Over rated, pre-loaded & dust protected bearing arrangement
- Trolley car mounted version gives accessibility to full shop length
- Assure high quality welding with non-dependent on operator skills



OPTIONAL FEATURES

- Slewing ring for the Column rotation, instead of TR Bearings
- Operator chair, walkway for all models of C&B
- Motorized column swivelling from 0 to 360 degree

- Integration of control panel with welding head, seam tracker, FRU etc
- CCTV camera feedback system for controlling of welding head location from ground level

TECHNICAL SPECIFICATIONS

Model	Vertical Stroke (mm)	Horizontal Stroke (mm)	Height Under Boom (mm)		Over all Dimension (mm)			Inner dist between Rail "C"
			Minimum "A"	Maximum "B"	Length "L"	Width "W"	Height "H"	
CBM 2020(P)	2000	2000	850	2850	4000	1800	3750	N.A.
CBM 2020(T)	2000	2000	875	2875	4000	1800	3775	1000
CBM 2525(P)	2500	2500	850	3350	4500	1800	4250	N.A.
CBM 2525(T)	2500	2500	875	3375	4500	1800	4275	1000
CBM 3030(P)	3000	3000	1100	4100	5300	2100	5000	N.A.
CBM 3030(T)	3000	3000	1150	4150	5300	2100	5050	1440
CBM 4040(P)	4000	4000	1200	5200	6700	2500	6100	N.A.
CBM 4040(T)	4000	4000	1250	5250	6700	2500	6150	1440
CBM 5050(P)	5000	5000	1200	6200	7700	2500	7100	N.A.
CBM 5050(T)	5000	5000	1250	6250	7700	2500	7150	1600
CBM 6060(P)	6000	6000	1300	7300	8700	2500	8200	N.A.
CBM 6060(T)	6000	6000	1350	7350	8700	2500	8250	1600

NOTE

- In view of continuous development, we reserve the right to modify the design & dimensions without notice.
- Any model not mentioned here can be designed manufactured & supplied as per the customer requirement.



WELDERS TO THE NATION SINCE 1951
ADOR WELDING LIMITED
 (Formerly Known as Advani-Oerlikon Ltd.)

www.adorwelding.com

